

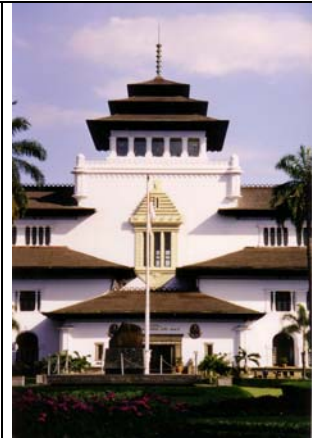
Going for a walk through colonial booming Bandung: a daydream in art-deco-style



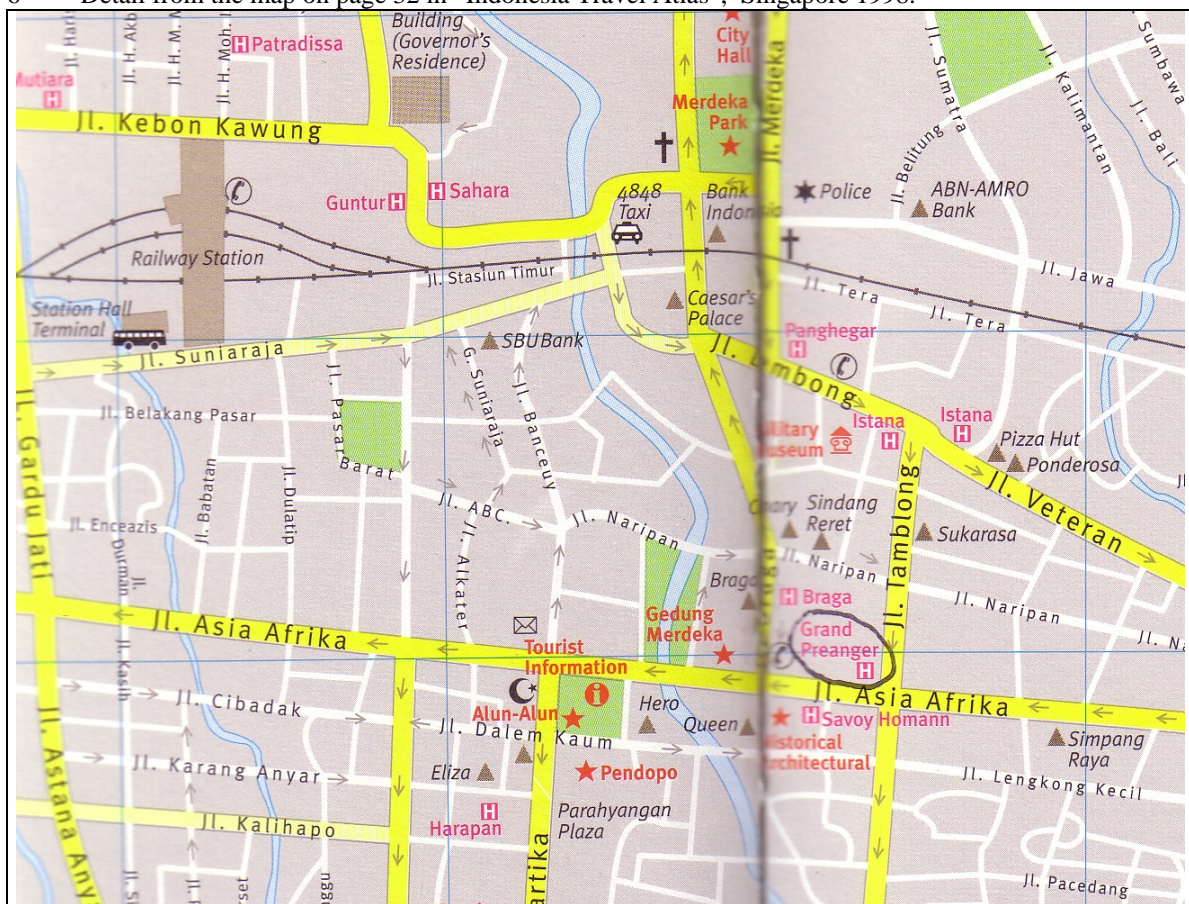
Wonderfull examples of Netherlands-Indian Architecture: 1. Dago Tea House / Dago Theehuis (1932), 2. Bumi Siliwangi / Villa Isola (1922), 3. Bank Indonesia / Javasche Bank (1918).



Below: 4 and 5. Office of the governor of West-Java / (colonial) Department of Government Undertakings (1922), well known as Gedung Sateh because of the Javanese-style tiered roof. Pictures 1,3 and 5: photographs Dirk Teeuwen (DT), 2000. Pictures 2, 4: postcard-collection DT.



6 Detail from the map on page 32 in "Indonesia Travel Atlas", Singapore 1998.



Let's jump on the train in Jakarta-Gambir and go for a walk through a part of fascinating Bandung! From Grand Hotel Preanger we walk along Jn Asia-Afrika / Groote Postweg to Hotel Savoy Homann, Gedung Merdeka / Sociëteit Concordia Oranjeclub), Jalan (Jn) Braga and railroad level crossing, Taman Merdeka, Taman Lalulintas / Insulindepark (Jalan Kalimantan area).



7. Stasiun Gambir east-side, opposite Gereja Immanuel / Willemskerk, Jakarta / Batavia 1937.

8. Stasiun Gambir west-side, Medan Merdeka / Koningsplein,, Jakarta 1987.

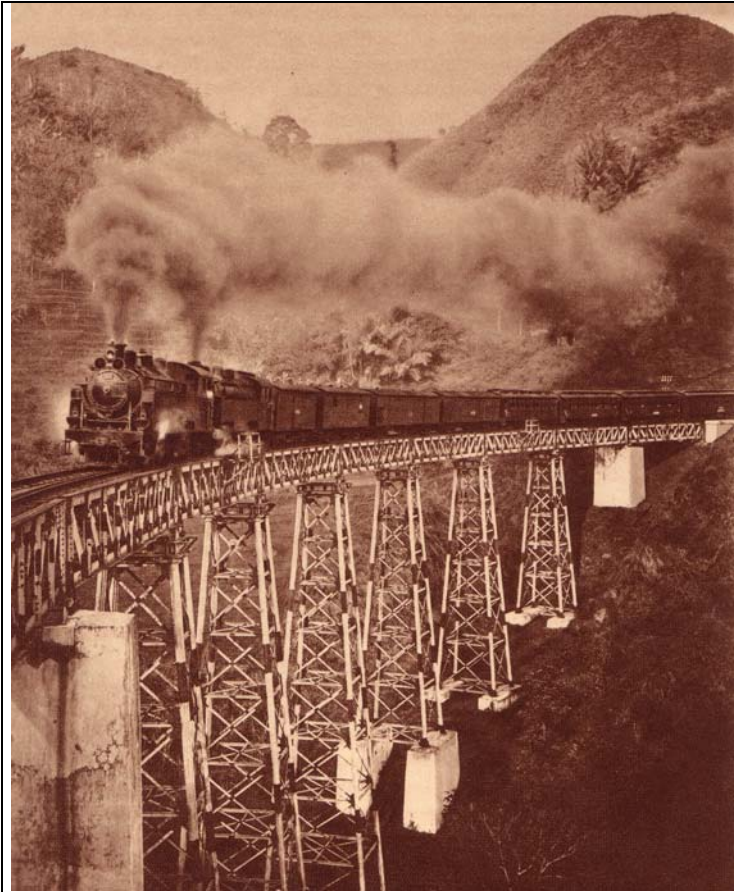
7. From: Gemeente Batavia, Batavia 1937, p. 34.

8. From: Beknopte gids voor Jakarta, Joan de Lijster-Streef, Jakarta 1987, detail from a photograph on p. 32.

8



Travelling from Jakarta to Bandung by train is in my (DT) opinion a good alternative. I did so occasionally and I must say that the Executive Express from Stasiun Gambir, Medan Merdeka Jakarta, is quite comfortable. That is: mostly. When I took the express in 2000 the air-conditioning was out of order. After half an hour I was absolutely soaked wet by perspiration. Not only me, locals also!! It takes three hours before arrival in Bandung. Departures frequently and punctual! In the year of 1810 the Dutch governor-general Daendels made a decision about the construction of a so-called Jalan Pos / Groote Postweg from the one end of Java, Anjer, to the other end, Banyuwangi.



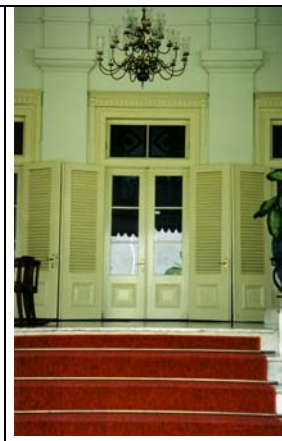
Desa Bandung was located originally near the crossing of the rivers Cikapundung / Citarum. From 1810 Bandung was gradually re-established around the alun alun as a Netherlands-Indian garrison town. The alun alun area: Jn Dalem Kaum, Jn Asia-Afrika / Jn Pos, Jn Naripan, Jn Tamblong. Bandung is blessed with beautiful colonial architecture and colonial dwelling-houses. On arrival in Bandung we can see a fine example of 19th century colonial architecture. The elegant Residence of the governor of West Java / residentswoning (1867) finds itself across the square in front of the railway-station (1890). From here it is not so far to Hotel Savoy Homann. Hotel Homann, Jn Asia-Afrika / Grootte Postweg, was also built in 1880, but refurbished and extended in 1937. Homann is known for its Art Deco architecture. Another example of Art Deco style (sort of) is Grand Hotel Preanger (1929) along the same road. Renovation of the hotel took place in 1988. The colonial front remained unchanged. . The colonial bar right from the main entrance is a little bit obscure now. The new bar on the first floor is worth a visit and a Planter's Punch

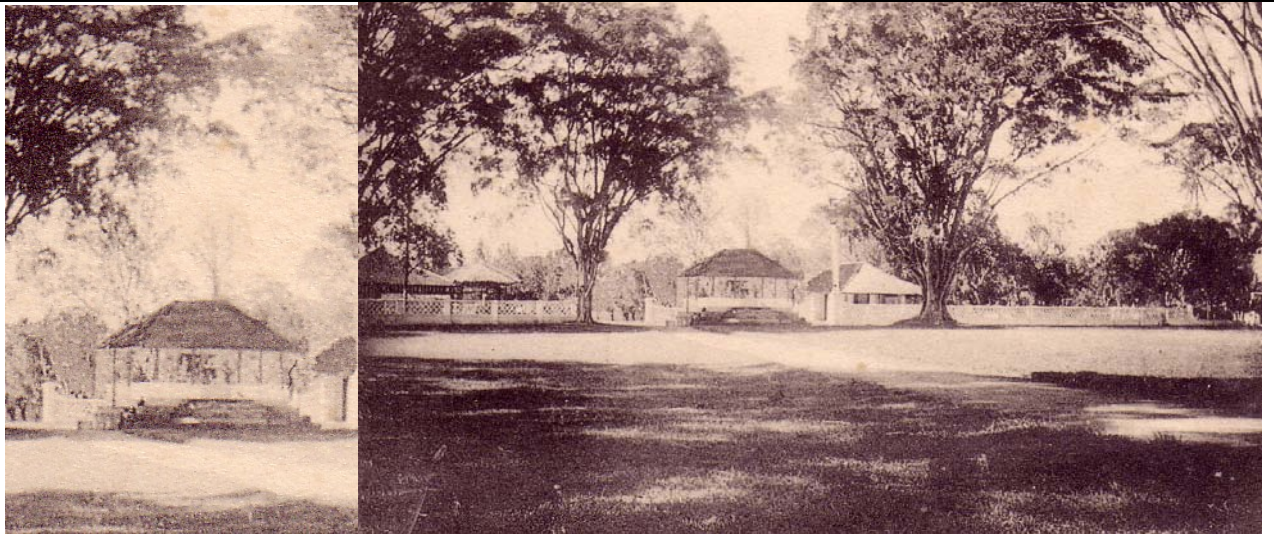
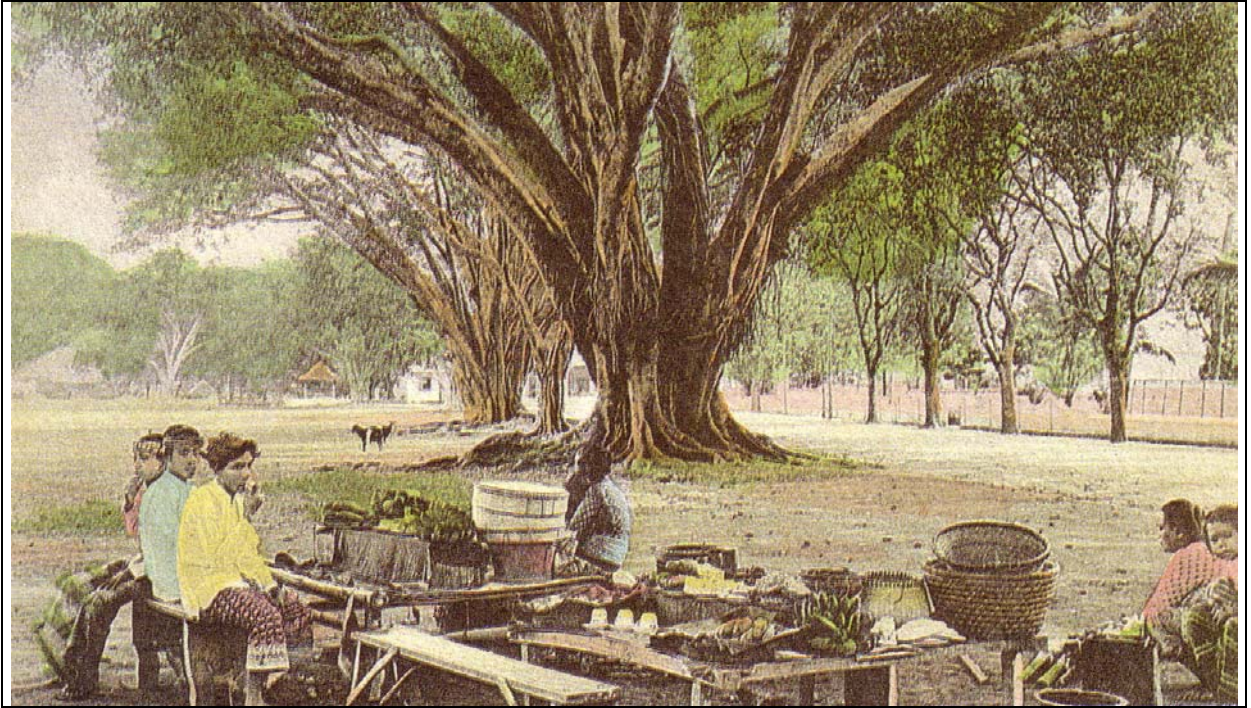
9. Preanger railway-track near Melangbong, Java 1925. From: S. A. Reitsma, Staatsspoor- en tramwegen in Nederlandsch-Indië, Batavia-Weltevreden 1925, p. 61. Picture 10, 11 Residence of the governor of West-Java (1872), photographs DT 2000.

10



11





12 (top) ~1918; 13, 14 (pendopo?), ~1918 and ~1870 (13,14): postcard-collection DT.



15. Hotel Preanger in 1896. From: Justus van Maurik, *Indrukken van een totok*, Amsterdam 1898, p. 163; 16, 17, 18 postcard-collection DT, 19 photograph DT 2000.
 16. Grand Preanger in 1936. On the right: the still existing colonial bar with terrace.
 17. The front in 2000.
 18. In *Asia-Afrika* in 1928, Preanger on the right.
 19. We said so: the new bar is worth a visit and a Planter's Punch.

16



17



18



19



20, Jn Asia-Afrika / (Groot) Postweg in 1924. Left from the Benhur/Dokar, more or less invisible, Hotel Homann. On the left side of the road, in the middle of the postcard, a building with a short tower: Department Store De Vries. De Vries was located on the triple-forked road Postweg-Bragaweg; opposite Bragaweg. On the same spot the old Sociëteit Concordia was situated from 1879 until 1895. Postcard collection DT.

21, Hotel Homann in 1914 postcard-collection DT. 22, Hotel Savoy Homann (1936) in 2000, photo DT.

8

23



24



25



26

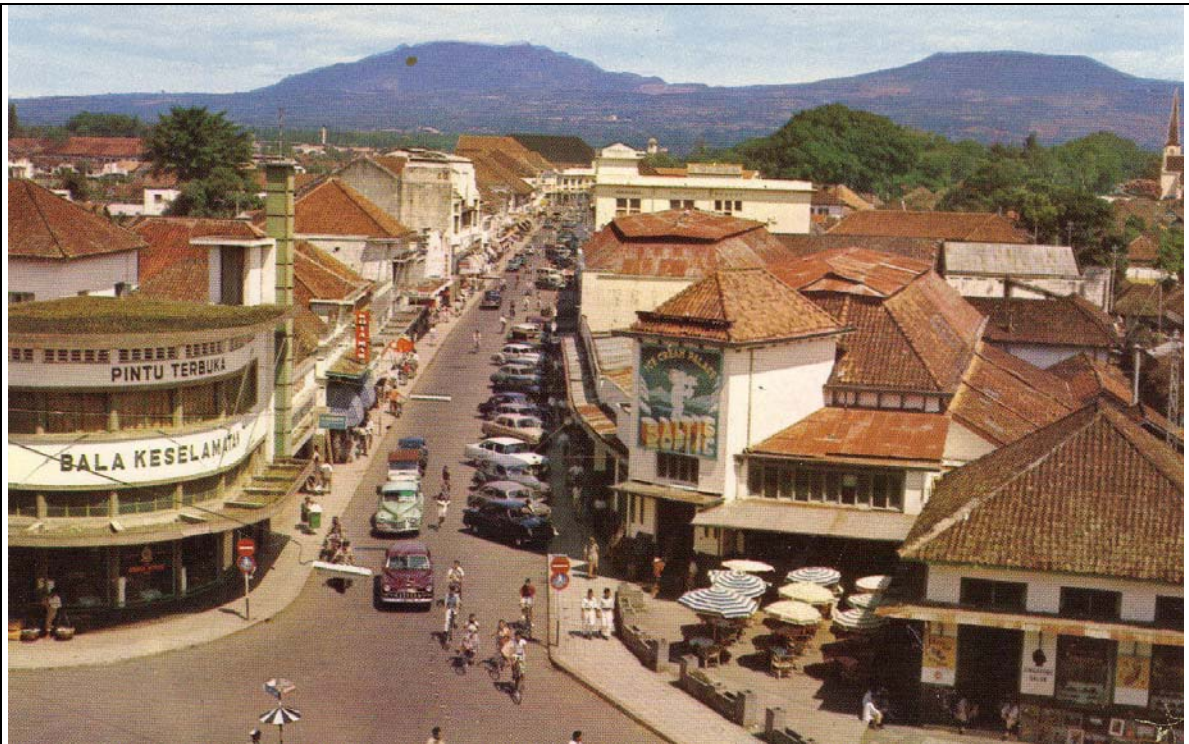
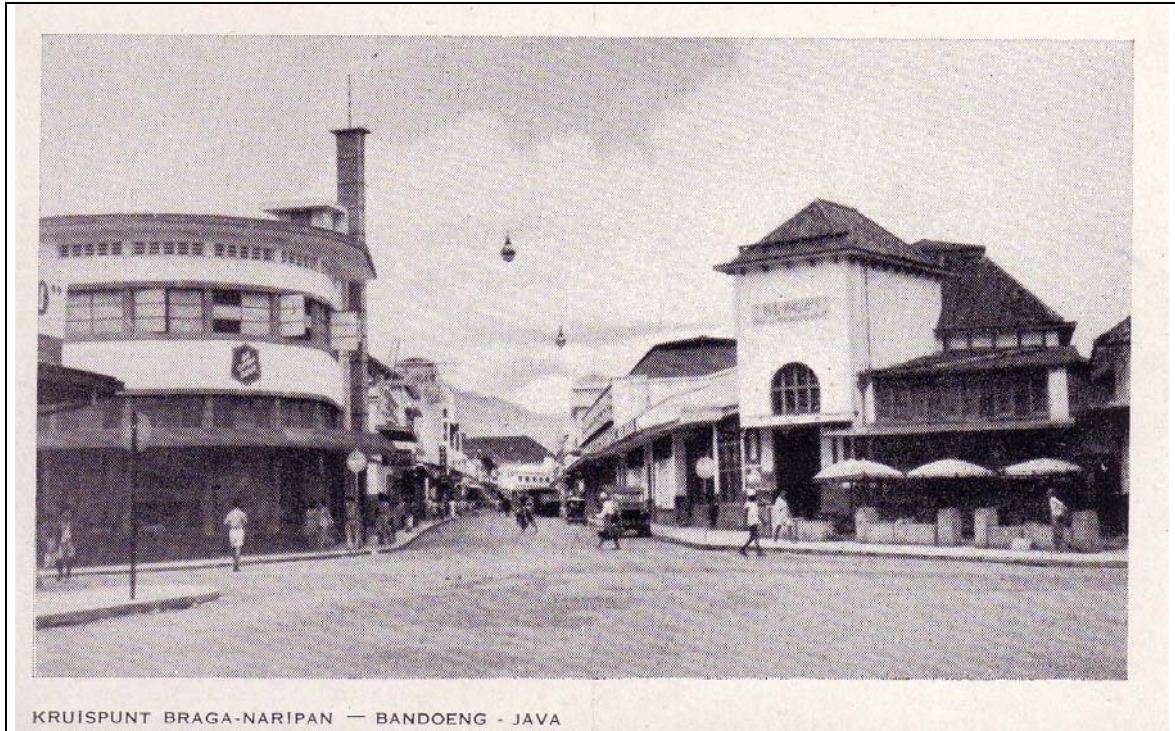
27



23, 24 resp. Gedung Merdeka / Sociëteit Concordia 2000 / 1936. 25, Oranjeclub/bar, part of Sociëteit Concordia in 1936, corner Jn Braga_Jn Asia-Afrika. 26, 27, Braga in 2000, Canary Bakery on 26 (in former days Braga Restaurant).

23, 26 and 27 photo DT.

24 and 25 postcard-collection DT.



28. Jn Braga / Bragaweg in 1926, postcard-collection DT.

29. Jalan Braga in 1955, postcard-collection DT.

Nowadays Jn Braga is only a shadow of its former self. Some lower fronts are worth a look. But that's all. See 26, 27.



30. Infantry of the Royal Netherlands-Indian Army KNIL marches into Jn Braga in 1918. On the left (corner Jn Asia-Afrika / Braga) the Oranjeclub / Sociëit Concordia. Source: C. A. Heshusius, *Het KNIL van Tempo Doeloe*, Amsterdam 1988, p. 37. "At the tail of the detachment a field-kitchen on wheels with fire and smoke."

31



32



33



31. Colonial Bandstand in Taman Merdeka / Pieter Sijthoffpark (Pieterspark for short), photo DT 2000.

32. Protestant Bethel Church (1928), photo DT 2000. (West from Pieterspark.)

33. Katedral Katolik / Katholieke Kerk in 1932, postcard-collection DT. (East from Pieterspark.)



34. Aerial photograph 1923. In the middle the Department of War in Taman Lalulintas / Insulindepark, north of Pieterspark (1922). On the left the residence of the army commander. Right from the department the former secondary school / HBS. From: F. L. Kroesen red., *Tanda Mata KNIL*, 1983 Dordrecht (Stabelan), p. 15.

35, 36, from: *Nederlansch Indië, "Volkslektuur"*, Batavia-Weltevreden 1926 and *Indië in Woord en Beeld*, L. F. van Gent ed., Batavia-Weltevreden 1924.

12

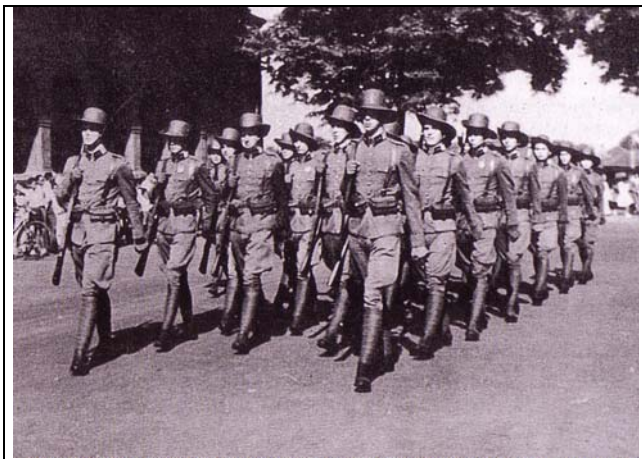
37



38



39



In the past Bandung has been described as 'Paris of Java' . But much of its former glamour has faded. Jalan Asia-Afrika / Postweg divided the riff-raff in the south from the wealthy Dutch in the north. Pre-war upper class villa's can be found in the north (37. Taman Maluku (Jn Ambon) / Molukkenpark 2000), pre-war middle class dwelling houses in the south (38. Jn Lengkong 2000). Photo's DT 2000.

Marching military cadets in 1949 (39). The Military Academy was located at Jn Pasang/ Houtweg. Detail from a photo in "Weerzien met Indië" Zwolle Holland 1995.

Maybe this is the right moment for us to march back to Grand Hotel Preanger for a Bir Bintang or two.

drs. MSc D. Teeuwen